

ideal
HEATING

HALO
LITE RF

Halo Lite RF launch manual.

WIRELESS AND EASY TO INSTALL



Contents.

- 4. Introduction: What are we doing?
- 5. The Market: Why are we doing it?
- 6. Product description / Images
- 8. Installation overview
- 16. Energy efficiency
- 17. Boiler Plus
- 18. Lead messaging
- 19. Features and benefits
- 20. The benefits
- 22. Technical specifications
- 24. Competitor comparison
- 26. Product supporting material
- 27. FAQ



Introduction: What are we doing?

Building on the success of the Halo Lite, and the rest of the Halo platform, Ideal Heating are strengthening the control offering by launching a low cost RF version of the Halo Lite control.

The Halo Lite RF is an entry level wireless thermostat specifically designed for the budget one-off segment of the market and Social Housing, where wireless controls are required. This is in addition to Halo Lite and is not a replacement product.

It is seen as good value for money with a quality screen, mid range aesthetics and is easy to use.

Launching in October 2023, the Halo Lite RF will keep the same attributes for screen quality, functionality and aesthetics as the original Halo Lite; but with the additional flexibility of a wireless PRT.



Halo Lite RF

The market: Why are we doing it?

The market segment for entry level RF controls is very price competitive. The market is generally dominated by simple controls favouring a limited 7 segment type display with some symbols to indicate modes. These controls are often paired with budget range boilers, such as the OEM brands of the Base² range, with the package being favoured by landlords as low cost heating systems.

Offering a control at a similar price point to the current market offering but with better aesthetics will give the perception of a more premium heating system without additional cost.

Halo Combi RF is heavily contract supported to Social Housing customers to compete with other low cost controls. The price point that we aim to achieve with the low cost RF product is lower than the contract supported pricing, as a result it is expected that the majority of the volume of Halo Combi RF that is contract supported to Social Housing customers will be migrated to the new Halo Lite RF.

TARGET MARKET SEGMENT

This control is targeted predominantly at the budget one-off market, who currently purchase the OEM brands of the Base² range, plus, the i-mini and Independent.

This control will also be targeted at the Social Housing segment, migrating the majority of the Halo Combi RF sales currently going into Social Housing today.

KEY NEEDS OF TARGET MARKET

End user

- Easy to use
- Aesthetically pleasing
- Reliable

Installer

- Quick and easy to install and set up
- Boiler Plus compliance
- Easy for householder to use

Housing Provider

- Easy to install
- Boiler Plus compliance
- Easy for tenant to use (minimal calls to help desk)



Product description.

Name: Halo Lite RF

UIN: 237423

OpenTherm wireless programmable room thermostat (PRT) with wall mounted receiver compatible with the Base² range, and all Logic Combi boilers from 2016 onwards.

Control is provided by OpenTherm from the Receiver which wirelessly connects to the PRT through the use of 868Mhz wireless protocol. Power for the receiver is 230Vac and the PRT requires 4x AA batteries (supplied).

Aesthetically pleasing white PRT with dial (with push) and 2 button control, large clear screen with simple user interface.

Load compensating properties mean it provides compliance with Boiler Plus when installed with an appropriate boiler.

It fulfils the key user needs of being low cost, easy to use, easy to install, provides full flexibility (wireless) and Boiler Plus compliant (with an appropriate boiler).

It also has features designed specifically for social housing such as the landlord service timer function.

80% of the Ideal boilers sold into social housing are single zone combi installations which this control fulfils. It maintains the Logic "ethos" of being simple for both the user and installer.



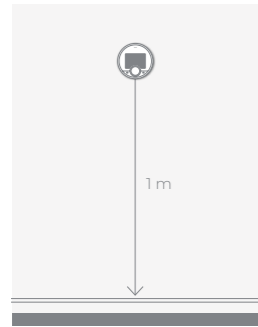
Halo Lite RF



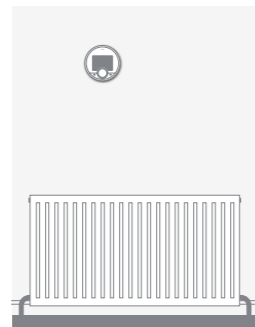
idealheating.com

Installation overview.

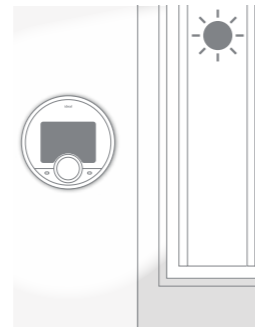
LOCATION GUIDELINES



A. Mounted 1 m above the floor.



B. Not above radiator/ heat source.



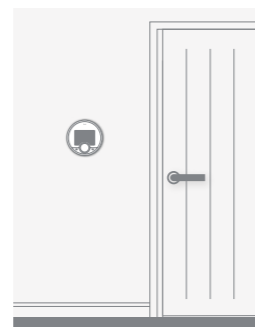
C. Not in direct sunlight.



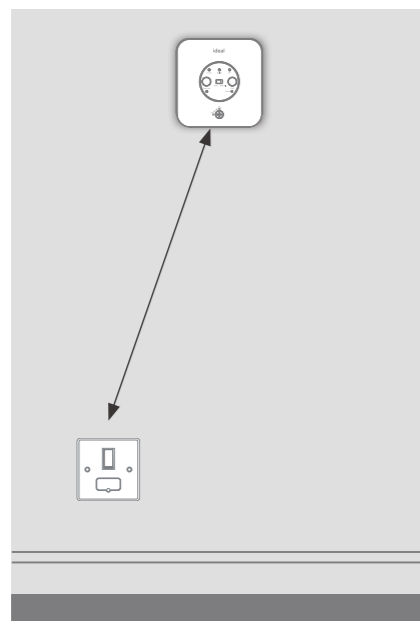
D. Away from any draughts.



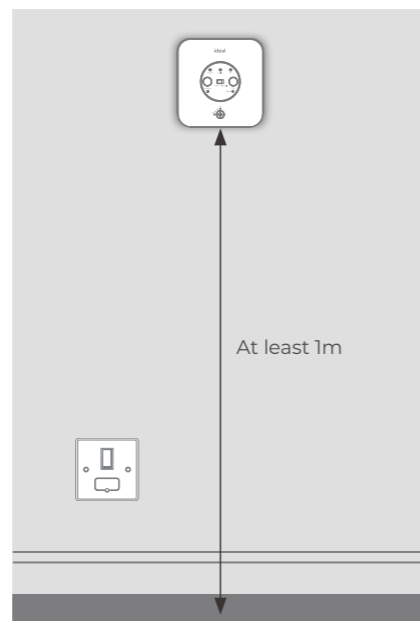
E. Not fitted behind curtains.



F. Internal use only.



G. The receiver should be mounted close to a 230 V AC fused supply.

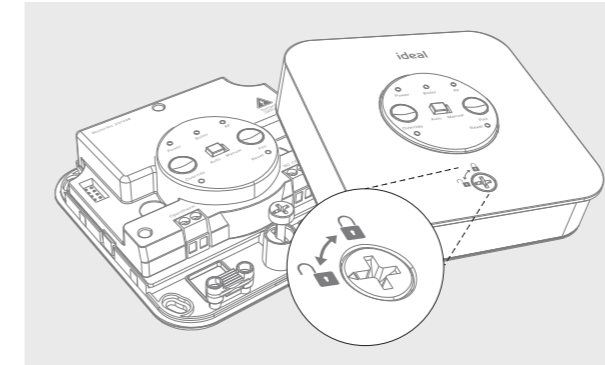


H. The receiver should be mounted horizontally on the wall at least 1m from the floor.

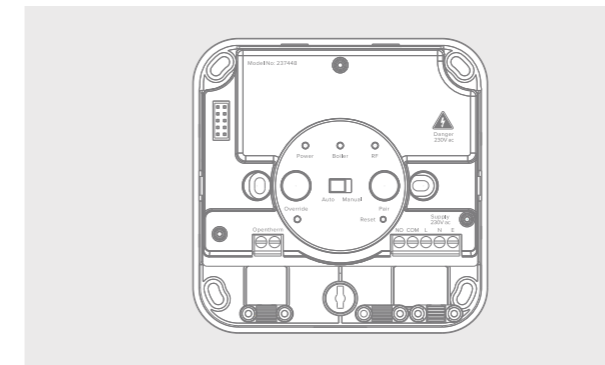
1. INSTALLATION OF THE HALO LITE RF RECEIVER

The Halo Lite RF Receiver must be installed by a competent person with the appropriate safety qualifications. All wiring must be adequately sheathed and insulated.

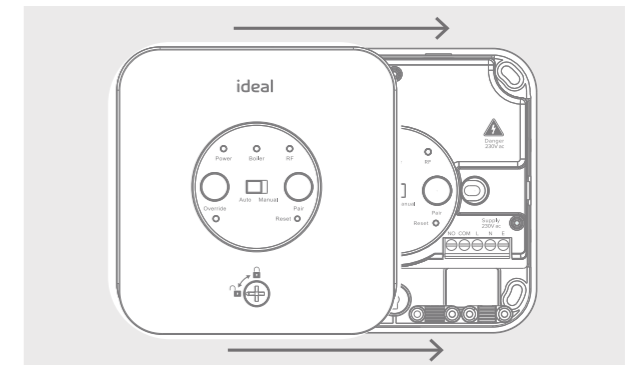
Isolate any 230 V AC mains supply to the Halo Lite RF Receiver and any other linked components before commencing works.



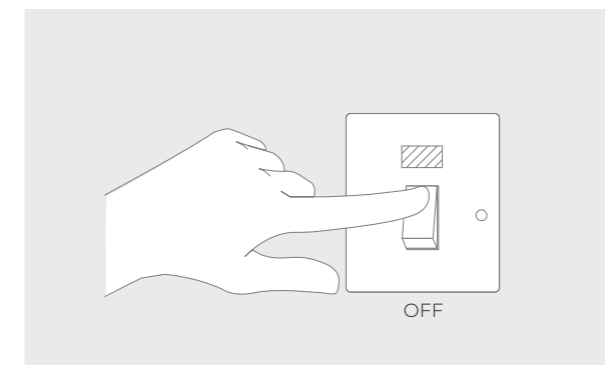
- A. Using a suitable screwdriver turn the locking key one quarter turn anticlockwise to the [UNLOCK] position. Remove the front panel by lifting the bottom edge first. Assemble in reverse order. Always remember to lock the front panel to the Halo Lite Receiver. The receiver is supplied out of the box in the [UNLOCK] position.



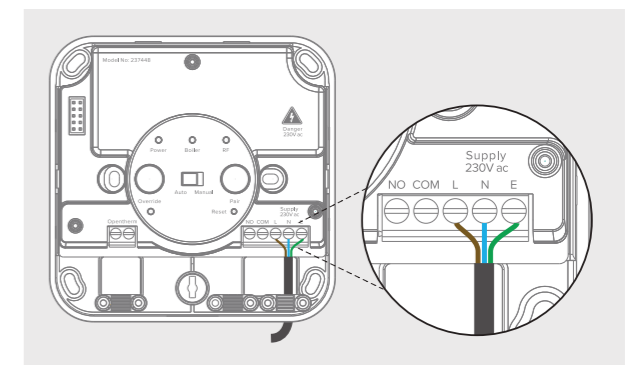
- B. To mount directly onto the wall, mark and drill mounting holes and fix the bracket to the wall using suitable fixings for the wall type.



- C. To mount over the electrical box, place the bracket over the electrical box and fix into place.



- D. Isolate mains supply.



- E. From the fuse spur wire the Live, Neutral and Earth connections into the right hand side connections marked L, N, (E). The wiring can be rear entry or surface mounted.

1.1 INSTALLING THE HALO LITE RF RECEIVER WITH A BOILER

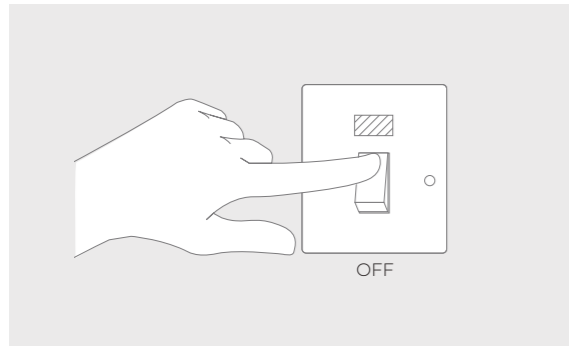
The below refers to the Ideal logic² combi boilers. Base² boiler wiring is in a very similar location to Logic and so the below will also be relevant for Base² boilers. For other models, please refer to the boilers installation manual to locate connections.

Wiring Guidelines

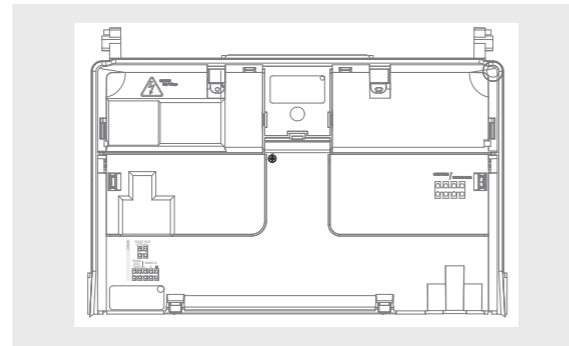
The Boiler connection to the Ideal Halo Lite RF receiver should only be wired into the OpenTherm low voltage connection and should not be connected to a 230 V AC supply. If utilising existing wiring, please ensure that the wiring is not connected to a 230 V AC supply.

Opentherm Cable Details:

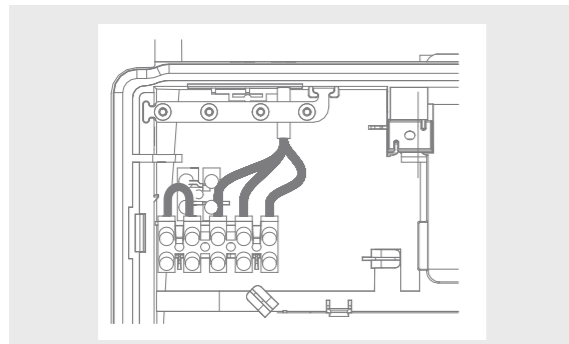
- Length between receiver to boiler is 50 meters maximum
- Core diameter - 0.5 – 1.0 mm diameter should be used, multi strand should be tinned
- Should not be adjacent to any 230 V AC cabling



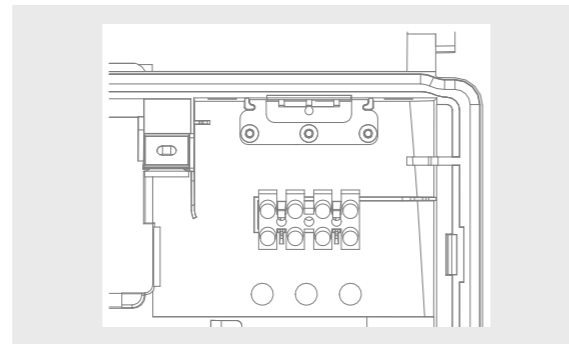
A. Make sure mains supply is still isolated



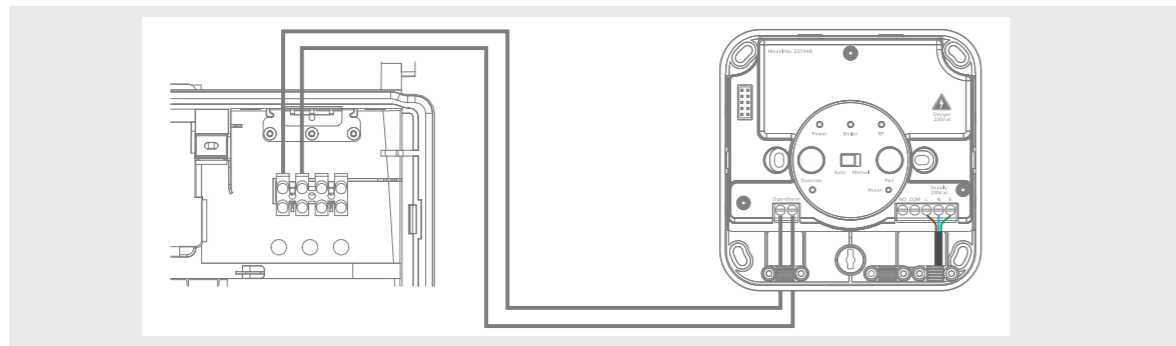
B. Remove boiler front panel and swing the control box into the servicing position.



E. Locate the mains wiring terminals (left hand side). If removed, replace the mains thermostat link.

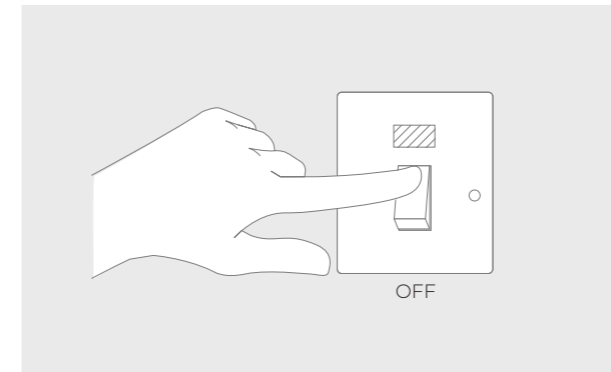


C. Locate the opentherm terminals (right hand side). Remove the link if present.

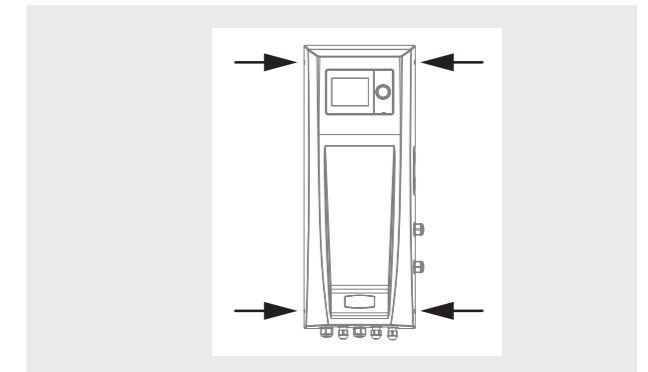


D. Wire the Halo Lite RF receiver to the boiler using the Opentherm connections. (Not polarity conscious). Continue to Section 6.

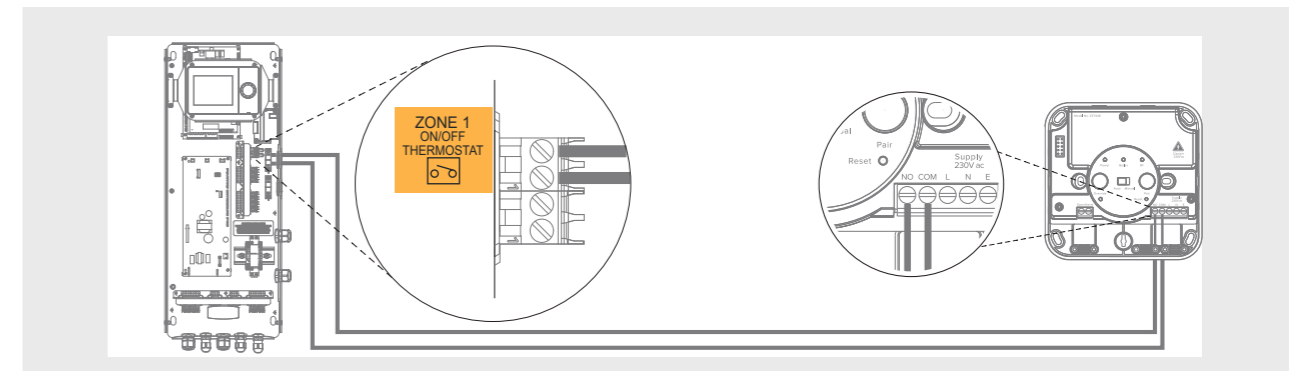
1.2 INSTALLING THE HALO LITE RF RECEIVER WITH A LOGIC AIR HEAT PUMP



A. Make sure mains supply is still isolated



C. Remove the 4 fixings displayed above and remove outer cover.



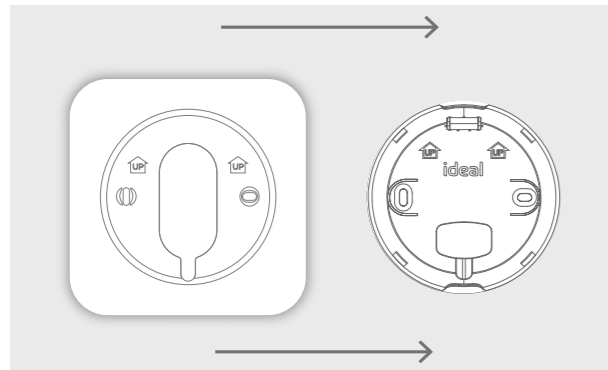
B. Connect the Receiver to the relevant zone connection on the Logic Air control panel (For 2 zone application wire into the second zone terminal).

2. INSTALLING THE HALO LITE RF PRT

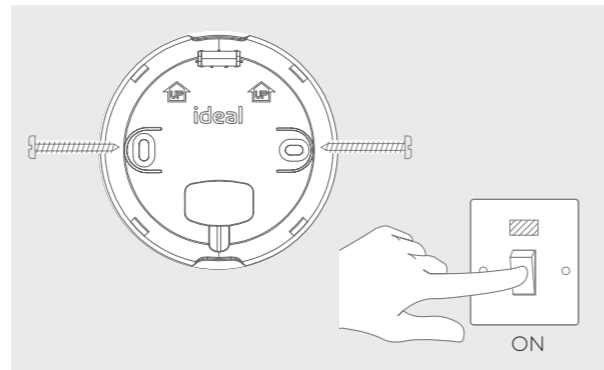
2.1 Wall Mounting

The Halo can be either wall mounted or desk mounted using the integrated rear housing and desk stand. If there are any concerns regarding signal strength and location of the wall mounted PRT it is advisable to pair the control and check the signal strength before fixing to the wall.

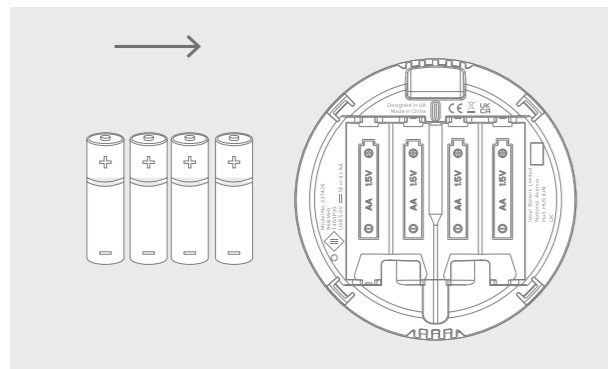
Note: The PRT and Receiver are pre-paired. Please follow the sequence below.



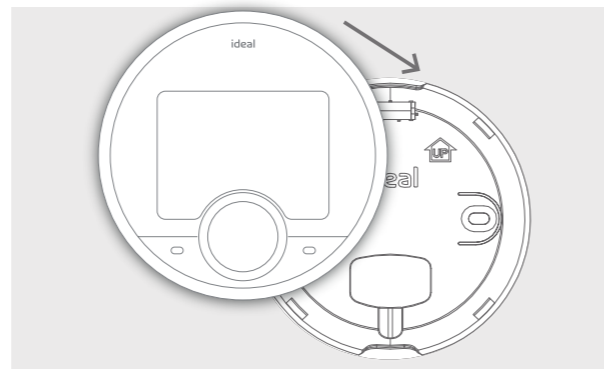
A. The Halo can be installed with or without the provided trim plate.



B. If no trim plate is required, use the rear housing of the Halo to position the unit on the wall, alternatively secure rear housing to trim plate. Take care not to over-tighten the screws. **Turn on power to Halo Lite RF Receiver.**

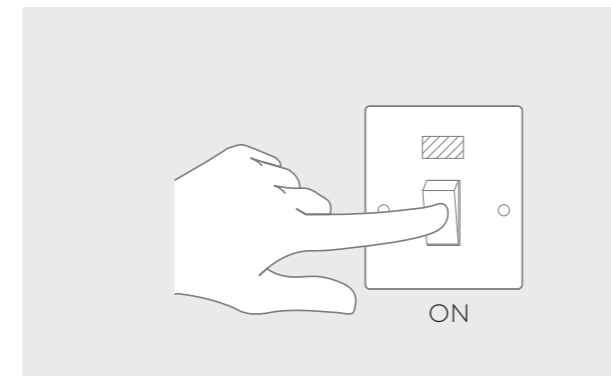


C. Insert the 4 AA batteries provided into the front housing of the Halo. Pay close attention that the orientation of the batteries is as indicated in the housing.

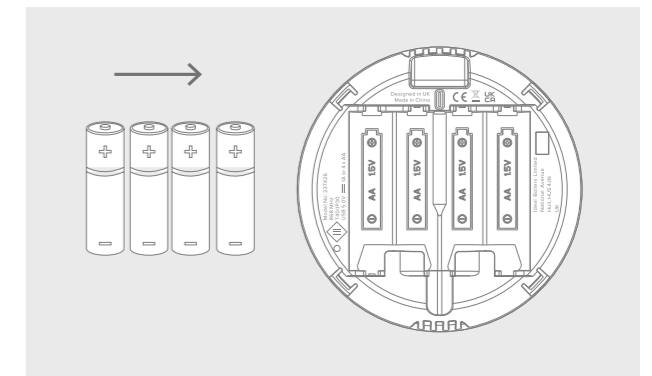


D. Locate the front housing (display) in position perpendicular to the rear housing and clip into place.

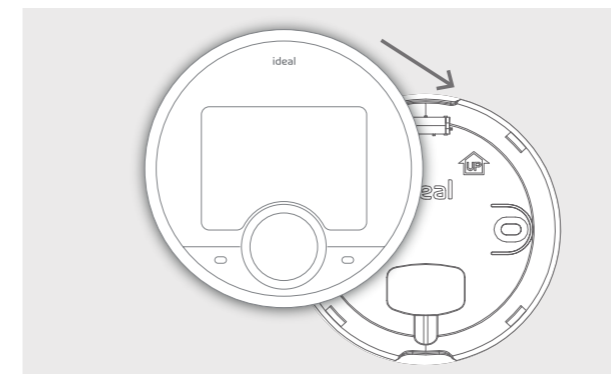
2.2 DESK MOUNTING



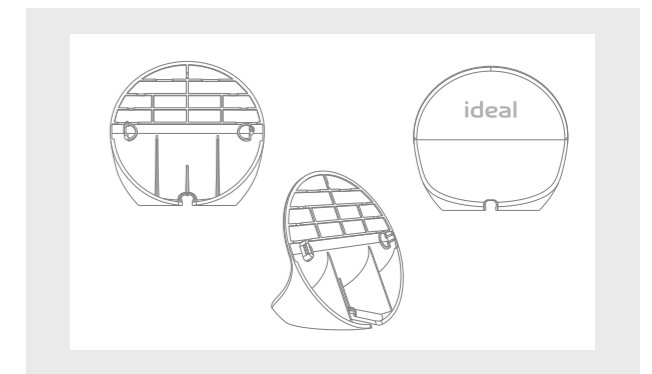
A. Turn on power to Halo Lite RF Receiver.



B. Insert the 4 AA batteries provided into the front housing of the Halo. Pay close attention that the orientation of the batteries is as indicated in the housing.



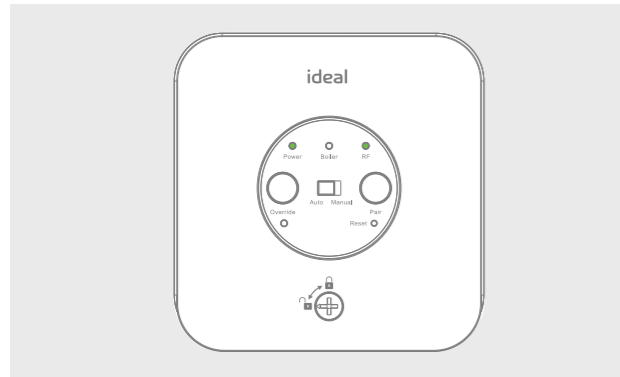
C. Locate the front housing (display) in position perpendicular to the rear housing and clip into place.



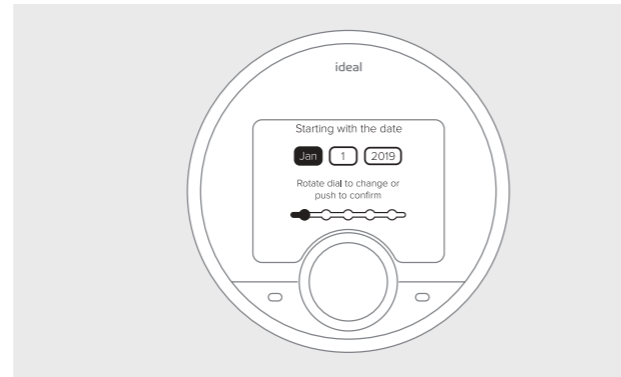
D. Clip the combined rear housing and display onto the desk stand.

Note, this is different from Halo desk stand installation as the rear housing, also used for wall mounting, is required to install the desk stand.

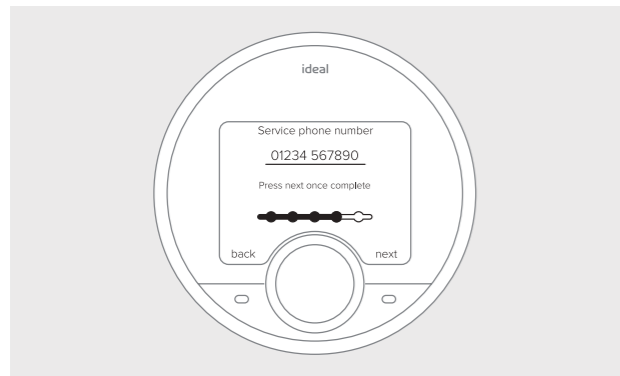
2.3 PAIRING



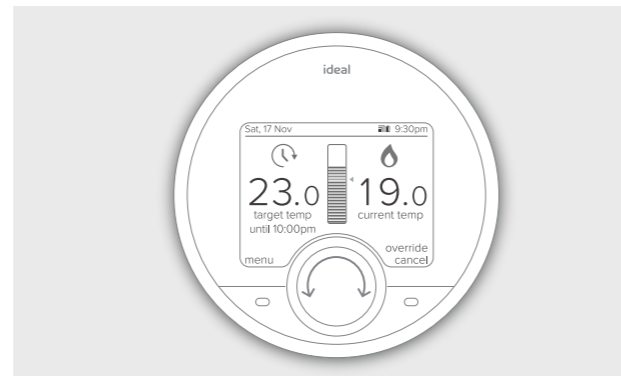
A. After power has been established. The unit will **automatically** pair to the PRT. Once this is completed the Power and RF LED will be solid Green. Make sure the side switch is in the auto position.



B. The device will prompt set up of the time and date using an easy step by step process.



C. There is the opportunity to add an installer contact phone number into the device at this stage, if not changed this will default to the Ideal Heating Customer Service number.



D. Once the setup is completed the home screen will be shown.



Scan the QR code for **more information**



Energy efficiency.

ERP EFFICIENCY

The following efficiencies can be achieved using Halo Lite RF:

- Class V when used in isolation
- Class VI when used with an outside sensor

Contribution to seasonal space heating energy efficiency:-

- 3% (Class V)
- 4% (Class VI)

The Ideal Halo Lite RF range will be available to select from the Product Characteristics Database (PCDB).

A SAP Registration label is included with the Halo Lite RF. This should be completed by the installer and affixed to the boiler.

Boiler Plus.

Boiler Plus is a set of standards implemented in England April 2018. These standards give housing providers a level of choice over how

energy efficient measures are implemented in their properties.

ERP 92%

Gas boilers installed into existing systems in England to have an ErP efficiency of at least 92%.

TIME AND TEMPERATURE CONTROL

Gas and oil boilers require time and temperature controls to be installed at the same time, if not already present and working.

ADDITIONAL ENERGY EFFICIENCY MEASURE

Combination boiler replacements to include the provision of an additional energy efficiency measure to be installed at the same time, such as enhanced load compensation, whether compensation, flue gas heat recovery or a smart control with automation and optimisation.

All Ideal domestic boilers achieve a minimum of 92% ErP efficiency.

The Ideal Halo Lite RF provides both time and temperature control and enhanced load compensation in one easy install.

Lead messaging.

Easy to use

Aesthetically pleasing

Large clear colour screen

Wireless

Simple, flexible install

Tenant and landlord benefits



Features and benefits.



Simple dial and button design



Service timer function



Boiler plus compliant



Backlit colour screen with large text and icons



Easy to install



Designed with tenant input



Wireless

The benefits.

EASY TO INSTALL

- Fast and simple to install
- Straightforward pairing process
- Wireless control with robust signal
- Wall bracket, desk stand and trim plate in the box for flexible locating
- Automatic device setup walk-through sequence on power up
- Load compensation provides easy Boiler Plus compliance

EASY TO USE

- Large, clear, colour screen
- Easy to find and understand fault messaging
- Simple set up service reminders including installer contact details
- Designed specifically to work with Ideal Heating boilers
- Easy to set heating schedules with up to 6 events per day
- Easy to use turn and tap interface

EASY TO LIVE WITH

- 2 years warranty*
- Easily adjustable schedule to fit any lifestyle
- Compact and contemporary design
- Designed to be discrete, place anywhere to blend into the home
- Designed to make life simple with holiday mode and child lock
- Maintain boiler health with on screen service and fault notifications
- Frost protection for winter boiler and system protection



Technical specification.

Power source	230Vac (receiver), 4x AA Batteries (room thermostat)
Communication protocol	OpenTherm (boiler and receiver) 868Mhz (receiver and room thermostat)
Stand supplied	Yes
Wall mounting bracket supplied	Yes
Trim plate supplied	Yes
Level indication for ease of installation	Yes
Voltage	230Vac
OpenTherm cable details	Core diameter - 0.5 – 1.0 mm diameter should be used, multi strand should be tinned
Boiler compatibility	Atlantic Combi, Classic Combi ² , Esprit Eco Combi ² , Exclusive Combi ² , Instinct Combi ² , I-mini Combi ² , Independent Combi ² , Logic Combi ESP1, Logic Code Combi ESP1, Logic Combi ² , Logic Combi ² IE, Logic+ Combi ² , Logic MAX Combi ² , Logic MAX Combi ² IE, Vogue Gen2 Combi, Vogue MAX Combi, Vogue MAX Combi IE
Heat pump compatibility	Logic Air (On/off control - cycle time 1 hour)
User Interface	Dial and buttons
Screen Type	Backlit colour TFT
Max scheduled events	6
Holiday Mode	Yes
Optimised start and stop	Yes
Delayed start	Yes
Override next event	Yes
Override plus hours	Yes
Manual Mode	Yes
OFF mode with frost protection	Yes
Child lock	Yes – press and hold 2 buttons
Service function	Yes – PIN number control
Upper and lower temperature limits	Yes – PIN number control
Frost protection	Yes – default 5C
ERP Class	V (VI if used with weather compensation)
Boiler Plus	Yes – Enhanced Load Compensation
WEEE	Yes

VOLUMETRICS

Product name	Product code	EAN
Halo Lite RF	237423	5022142374233

PRT details			
Device height (mm)	Device width (mm)	Device depth (mm)	Device weight (kg)
96	96	35	0.12
Receiver details			
112	108	32	0.18
Packaged unit details			
Packaged weight (kg)	Box height (mm)	Box width (mm)	Box depth (mm)
0.78	220	140	103

Pallet details					
Pallet height (mm)	Pallet width (mm)	Pallet depth (mm)	Units / layer	Layers / pallet	Pallet weight (kg)
950	1200	1000	64	3	167.5

PRICING DETAILS

List Price: **£69.99**



Competitor comparison.

	Drayton Digistat+3RF	Drayton Digistat RF901	ESI ES RTP4RF+		Honeywell T3R	Salus RT510RF+	Salus DT600RF	EPH COMBIPACK4	Halo Lite RF
Product									
Warranty	2 years	2 years	3 years		3 years	5 years	5 years	5 years	2 years*
Power supply (thermostat)	2 x AA batteries	2 x AA batteries	2 x AA batteries		2 x AA batteries	2 x AA batteries	2 x AA batteries	2 x AA batteries	4 x AA batteries
Desk stand for thermostat	No	Yes	Yes		Yes	Yes	Yes	Yes	Yes
ErP Class	IV	IV	V		V	IV	V	V	V
Installer contact details	No	No	No		No	No	No	No	Yes
Fault features	No	No	No		Yes	No	No	No	Yes
Holiday mode	Yes	Yes	Yes		Yes	Yes	Yes	Yes	Yes
Anti frost mode	No	No	Yes		Yes	Yes	Yes	Yes	Yes
Scheduling	Yes – with up to 6 events per day	Yes – with up to 6 events per day	Yes – with up to 6 events per day		Yes – with up to 6 events per day	Yes – with up to 3 events	Yes – with up to 6 events per day	Yes – with up to 6 events per day	Yes – with up to 6 events per day
Child lock	Yes	No	No		Yes	No	No	No	Yes

Product support material.

Launch manual
(internal document for reference)

Instruction videos (YouTube)

- Installation and set up
- Home screen – general guide
- Setting and changing schedules
- Holiday mode
- Override / plus hours
- Modes and mode changes

One-off technical sheet with features and benefits

Social technical sheet with features and benefits

Addition to Social Housing brochure

Social sales presentation

Web page



FAQS.

OUT OF THE BOX

What powers the Ideal Halo Lite RF?

4 AA alkaline batteries are required for the Halo Combi controls.

Are batteries supplied with the Halo Lite RF?

4 AA alkaline Duracell batteries are supplied with the Halo Lite RF.

Can rechargeable batteries be used in the Halo unit?

Ideal Heating do not recommend using any rechargeable batteries. Only alkaline batteries should be used.

Can I power the Halo Lite RF from an external power source?

You can power the device using a USB C lead located in the battery compartment. The existing batteries must be removed beforehand.

How long should the batteries last with general use?

It's estimated with general use that the batteries should last between 18-24 months.

Is the Halo Lite RF free standing?

The Halo Lite RF can be wall mounted or placed on the desk stand included.

Can I change the screen time-out on the Halo Lite RF?

To maximise the battery life, the backlit time-out has been fixed at 15 seconds.

COMPATIBILITY

Can the Halo Lite RF be fitted to a Heat or System boiler?

No, the Halo Lite RF is for single zone Combi boilers only.

Can the Halo Lite RF be used with external weather compensation?

Yes.

Is the Halo Lite RF compatible with all type of Ideal boiler?

The Halo Lite RF is Compatible with the following boilers:

Atlantic Combi, Classic Combi², Esprit Eco Combi², Exclusive Combi², Instinct Combi², I-mini Combi²,

Independent Combi², Logic Combi ESP1, Logic Code Combi ESP1, Logic Combi², Logic Combi² IE, Logic+ Combi², Logic Max Combi², Logic Max Combi² IE, Vogue Gen2 Combi, Vogue Max Combi, Vogue Max Combi IE.

The Halo Lite RF is also compatible with the following heat pumps:

Logic Air

For a full list of compatible products, please visit Idealheating.com

Is the Halo control compatible with non-Ideal boilers?

No, Halo is only compatible with Ideal boilers to ensure you get the greatest efficiency out of your central heating system as possible.

INSTALLATION

Where should the Halo Lite RF be positioned in the property?

The Halo should be mounted 1.2-1.5m above the floor if wall mounted. Alternatively, it can be desk mounted using the provided desk stand. It should not be installed above a radiator or heat source, not in direct sunlight, away from any draughts and not fitted behind a curtain.

The existing control is wired to the boiler. Can I wire the Halo Lite RF to the boiler?

No, the Halo Lite RF is a wireless controls, powered by batteries.

Can I input an installer contact number?

Yes, this can be inputted during the auto-setup sequence or, if required at a later date, can be inputted or altered via the settings menu.

The Halo Lite RF unit does not show anything on the screen.

If when turning the dial, nothing shows on the screen, ensure all 4 batteries are inserted correctly. If this does not work consider changing the batteries or check the unit powers up with a generic USB C lead which can be connected in the battery compartment.

How do you wake up the screen on the Halo Lite RF?

To wake up the screen, press either button or turn the control dial.

HALO FEATURES AND SETTINGS

What advanced settings are available to the installer?

Advanced settings should only be adjusted by a competent person, the wrong configuration can have a detrimental effect on the thermostat and the heating system.

Optimised start:

Boiler starts heating in advance of schedule so heating reaches the required temperature at the time specified.

Default: OFF

Optimised stop:

Boiler stops heating in advance of schedule so heating reaches the required temperature at the time specified.

Default: OFF

Delayed start:

If the room temperature is close to target temperature the heating start time is delayed to save energy.

Default: OFF

Display tolerance:

Select the display tolerance of the room temperature. Can be set at increments of 0.5 or 0.10°C.

Default: 0.10°C

Temperature offset:

Fine tune the room temperature display -2.5 to 2.5°C.

Default: 0

Daylight saving time Automatically move to daylight saving

Default: ON

Frost protection:

The temperature that will be used when to protect your home when the thermostat is off. Can be set 5°C to 17°C

Default: 5°C

Service phone number:

Opportunity to input Installer contact number for service reminders

Default: Ideal Boilers number

How do I add a schedule to the Halo Lite RF?

Your Halo will come with a pre-set schedule.

To alter this go into the Timed Heating Schedules section in the menu. For more information on how to alter a schedule either refer to the user guide that came with the Halo and is also available online at idealheating.com

How do I configure night setback (NSB)?

Currently there is no Night Set Back feature on the Halo Lite RF however, with 6 heating schedules per day there is the flexibility to set additional "on" periods with a lower set point to compensate for this.

How do I boost my heating on the Halo Lite RF thermostat?

In Auto mode turn the dial to the required temperature, a pop up menu will appear for you to select how long you want to change the temperature for; until start of the next scheduled event or for a set number of hours. Turn and push the dial to select. An override icon will then show on the screen.

How do I view or change my heating schedules on the Halo Lite RF?

Your Halo Lite RF will come with a pre-set schedule. To alter this go into the Timed Heating Schedules section in the menu. For more information on how to alter a schedule refer to the user guide that came with the Halo Lite RF and is also available online at idealheating.com

What is Optimised Start?

The boiler starts heating in advance of schedule so heating reaches the required temperature at the time specified.

What is Optimised Stop?

Boiler stops heating in advance of schedule so heating reaches the required temperature at the time specified.

What is Delayed Start?

If the room temperature is close to target temperature the heating start time is delayed to save energy.

How do I change the temperature of my heating on the Halo Lite RF?

In manual mode turn the dial until the desired target temperature is shown on the screen. In Auto mode turn the dial to the required temperature, a pop up menu will appear for you to select how long you want to change the temperature for; until start of the next scheduled event or for a set number of hours. Turn and push the dial to select. An override icon will then show on the screen.

How do I turn my heating off on the Halo Lite RF?

Press the right hand button to enter the mode menu, scroll to select OFF and push the dial to confirm.

What is frost protection?

Frost protection is active when the Halo is set to OFF. It will run the central heating system if the temperature drops to 5°C to prevent freezing.

How do I set holiday mode?

To set holiday mode, when your Halo is temporarily set to OFF for a pre-determined period of time. On the day you are due to leave press the left button to enter the menu, enter holiday mode and select how many days you would like holiday mode to last. Push the dial to confirm.

How do I set child lock?

To lock the screen to avoid any adjustments simply press the 2 buttons at the same time until the padlock icon appears. To remove the lock press the 2 buttons together again until the icon disappears.

Why can I see a spanner icon on my Halo Lite RF?

If a spanner is visible on the screen of your Halo it indicates that your boiler is due a service. If the spanner is grey your service is due in 60 days, if it is amber your service is due within 30 days, if it is red your fault is due now or overdue.

Why can I see an exclamation mark icon on my Halo?

If an exclamation mark is visible on the screen of your Halo control it indicates that your boiler has a fault. When the exclamation mark is visible the right hand button will take you to a fault page with a description of the fault on your boiler and instructions of what you need to do.

I've moved into a house that has an Ideal Halo RF installed, what should I do?

For more information on the Ideal Halo RF please see the User Guide on the Ideal Boilers website.

How do I contact Ideal technical support?

Technical Support telephone number is 01482 498663.

How do I change the batteries in my Halo Lite RF?

A red, empty battery symbol means that your Halo Lite RF batteries need to be replaced.

Whether you have a desk or wall mounted unit you will see the battery symbol on the base of the unit. There are also two finger grabs top and bottom as shown below. Use the finger grabs to gently pull the Halo away from the rear housing. Remove all the old batteries and replace with 4 new AA Alkaline batteries. Check you have the correct battery orientation then position the Halo back onto the rear housing and gently push into place until you feel a positive click.

The Halo will go through a short synchronisation process while it reconnects with your Halo Lite RF Receiver. The Halo will then return to the home screen.



Customer Service:

01482 498660

Technical Help:

01482 498663

Ideal Heating, PO Box 103, National Avenue,
Kingston upon Hull, East Yorkshire, HU5 4JN

E: enquiries@idealheating.com

idealheating.com |     

